

## MLS Area LS

Listings	This Month			Year-to-Date		
	Aug 2021	Aug 2020	Change	2021	2020	Change
Single Family Sales	136	238	-42.9%	1,082	1,132	-4.4%
Condo/TH Sales	13	21	-38.1%	118	98	+20.4%
<b>Total Sales</b>	<b>149</b>	<b>259</b>	<b>-42.5%</b>	<b>1,200</b>	<b>1,230</b>	<b>-2.4%</b>
New Homes Only	10	23	-56.5%	91	137	-33.6%
Resale Only	139	236	-41.1%	1,109	1,093	+1.5%
Sales Volume	\$140,836,119	\$216,678,022	-35.0%	\$1,098,789,865	\$868,324,750	+26.5%
New Listings	177	208	-14.9%	1,509	1,607	-6.1%
Pending	46	234	-80.3%	112	1,381	-91.9%
Withdrawn	20	30	-33.3%	119	206	-42.2%
Expired	3	11	-72.7%	33	85	-61.2%
Months of Inventory	1.3	1.2	+9.3%	N/A	N/A	--

Average	This Month			Year-to-Date		
	Aug 2021	Aug 2020	Change	2021	2020	Change
List Price	\$939,564	\$859,437	+9.3%	\$884,140	\$722,965	+22.3%
List Price/SqFt	\$308	\$244	+26.4%	\$294	\$229	+28.5%
Sold Price	\$945,209	\$836,595	+13.0%	\$915,658	\$705,955	+29.7%
Sold Price/SqFt	\$311	\$241	+29.5%	\$305	\$224	+36.0%
Sold Price / Orig LP	101.6%	98.0%	+3.7%	104.6%	97.0%	+7.9%
Days on Market	23	56	-59.0%	23	67	-65.7%

Median	This Month			Year-to-Date		
	Aug 2021	Aug 2020	Change	2021	2020	Change
List Price	\$723,000	\$619,900	+16.6%	\$702,500	\$579,900	+21.1%
List Price/SqFt	\$286	\$214	+33.5%	\$264	\$206	+28.2%
Sold Price	\$730,000	\$618,679	+18.0%	\$740,317	\$573,000	+29.2%
Sold Price/SqFt	\$290	\$213	+36.4%	\$279	\$203	+37.0%
Sold Price / Orig LP	100.0%	99.0%	+1.0%	103.0%	98.0%	+5.1%
Days on Market	8	21	-61.9%	6	30	-80.0%

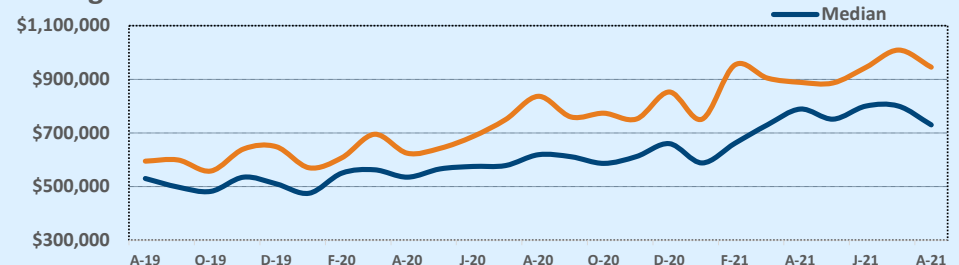
## Residential Statistics

## Independence Title

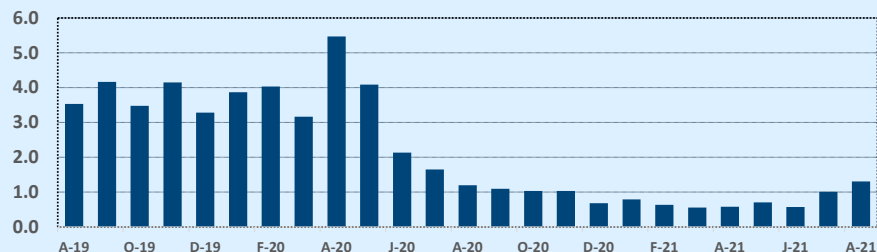
## August 2021

Price Range	This Month			Year-to-Date		
	New	Sales	DOM	New	Sales	DOM
\$149,999 or under	1	--	--	2	--	--
\$150,000- \$199,999	--	--	--	--	--	--
\$200,000- \$249,999	1	--	--	7	6	21
\$250,000- \$299,999	1	--	--	15	11	43
\$300,000- \$349,999	4	1	17	21	19	55
\$350,000- \$399,999	1	3	3	41	32	14
\$400,000- \$449,999	4	5	10	62	47	10
\$450,000- \$499,999	10	4	13	92	60	11
\$500,000- \$549,999	8	10	11	83	79	16
\$550,000- \$599,999	14	17	34	116	84	16
\$600,000- \$699,999	18	22	13	198	173	19
\$700,000- \$799,999	33	25	8	200	169	21
\$800,000- \$899,999	26	10	59	155	102	30
\$900,000- \$999,999	20	5	90	120	90	18
\$1M - \$1.99M	23	38	19	298	269	21
\$2M - \$2.99M	9	8	37	59	43	52
\$3M+	4	1	14	40	16	122
<b>Totals</b>	<b>177</b>	<b>149</b>	<b>23</b>	<b>1,509</b>	<b>1,200</b>	<b>23</b>

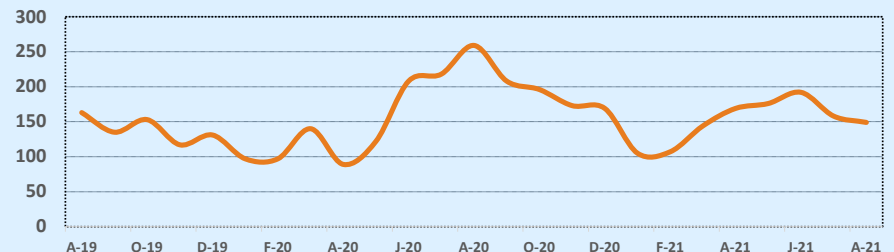
### Average & Median Sales Price - Last Two Years



### Months of Inventory - Last Two Years



### Number of Sales - Last Two Years



Based on information from the Austin Board of REALTORS® (alternatively, from ACTRIS). Neither the Board nor ACTRIS guarantees or is in any way responsible for its accuracy. The Austin Board of REALTORS®, ACTRIS and their affiliates provide the MLS and all content therein "AS IS" and without any warranty, express or implied. Data maintained by the Board or ACTRIS may not reflect all real estate activity in the market.